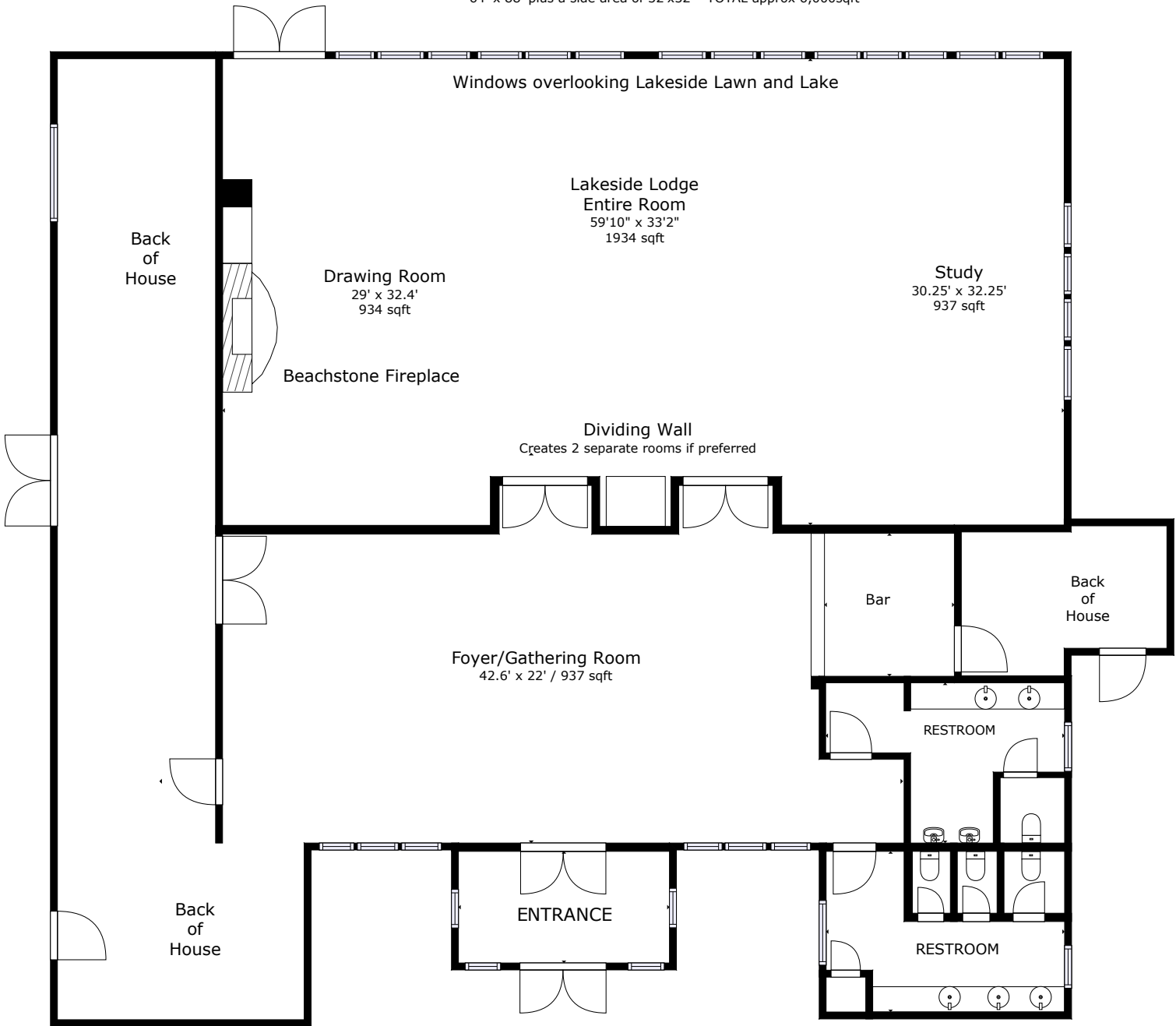


Lakeside Lodge at White Point



Outside area: Lakeside Lawn, Bonfire Area along the edge of Lake
 64' x 88' plus a side area of 32'x32' TOTAL approx 6,000sqft



Parking Area

	Reception	Theatre	Classroom	U Shape	Hallow Square	Boardroom	Half Ovals 5	Ovals of 8	Dimensions	Sqft	Ceiling Height
Lakeside Lodge	150	150	85	-	48	60	65	100	59.4' x 32.2'	1934	8'
Drawing Room	90	90	50	30	32	30	30	60	29' x 32.4'	939	8'
Study	90	90	50	30	32	30	30	60	30.25 x 32.25'	938	8'
Foyer	90	90	50	-	-	-	-	-	42.6' x 22'	937	8'
Lakeside Lawn	200			-					64' x 88'	+6000	